



A Document Worth Reading...

FROM SCANVEC AMIABLE

Configuring Advanced Parallel Port Output *A Guide To Setting Up Certain Specialized Parallel Ports*

Occasionally, Special circumstances require a little extra effort...

If you attempt to print through your Parallel port to some devices you may receive an error message that Production Manager is unable to open the port in ECP mode. *Image 1*

If you encounter this message, here is what needs to be done:

In the System BIOS (it is recommended that a skilled technician perform this step):

1. Change the port mode for the appropriate LPT port to ECP mode
2. Save changes and exit

On the affected computer (where make sure all Flexi and PhotoPRINT programs are completely closed):

3. In Windows Explorer browse to locate the file 1284INST.EXE file in the Program folder for your Flexi or PhotoPRINT product *Image 2*
4. Double click the 1284INST file name to run the application
5. Restart your computer

Image 1: Error Message

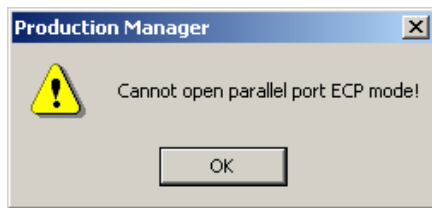


Image 2: 1284INST location

